

See Connection help overleaf if the Data indicator doesn't light up on the extender or the hotspot.

1

2

3

1

2

3

1 Plug the hotspot directly into a wall power socket near the device you want to connect. Make sure the socket's switched on.

2 Check the **On/Off** button on the side of the hotspot is on.

3 Wait for connection to complete. Give it a couple of minutes. If everything is okay, the **Power**, **Data** and **Wireless** indicators on the hotspot and the **Power**, **Data** and **Ethernet** indicators on the extender will light up.

General information

For information on safety instructions, technical information or setting up the hotspot kit, please see the Frequently Asked Questions at bt.com/hotspot1000

Guarantee

Your Wi-Fi Home Hotspot 1000 Kit is guaranteed for a period of 3 years from the date of purchase. Subject to the terms listed below, the guarantee will provide for the repair of, or at BT's or its agent's discretion, the option to replace the Wi-Fi Home Hotspot 1000 Kit or any component thereof which is identified as faulty or below standard, or as a result of inferior workmanship or materials. Products over 28 days old from the date of purchase may be replaced with a refurbished or repaired product.

The conditions of this guarantee are:

- the guarantee shall only apply to defects that occur within the 3 year guarantee period
- proof of purchase is required
- the equipment is returned to BT or its agent as instructed.

This guarantee does not cover any faults or defects caused by accidents, misuse, fair wear and tear, neglect, tampering with the equipment, or any attempt at adjustment or repair other than through approved agents.

This guarantee does not affect your statutory rights.

To find out what to do if your kit is in or outside of the 3 year guarantee, please see the Frequently Asked Questions at bt.com/hotspot1000

How to recycle your equipment

The symbol shown here and on the product means that the product is classed as electrical or electronic equipment, so DO NOT put it in your normal rubbish bin.

It's all part of the Waste Electrical and Electronic Equipment (WEEE) Directive to recycle products in the best way – to be kinder to the planet, get rid of dangerous things more safely and bury less rubbish in the ground.

You should contact your retailer or supplier for advice on how to dispose of this product in an environmentally friendly way.

R&TTE Directive & Declaration of Conformity

This equipment complies with the essential requirements for the Radio Equipment and Telecommunications Terminal Equipment Directive (1999/5/EC).

For a copy of the Declaration of Conformity please refer to bt.com/hotspot1000

This product uses open source codes available from bt.com/help/gplcode

Wi-Fi Home Hotspot 1000 Power consumption	
In operation	6.0 Watts
Network standby	5.0 Watts
Off mode	0.2 Watts

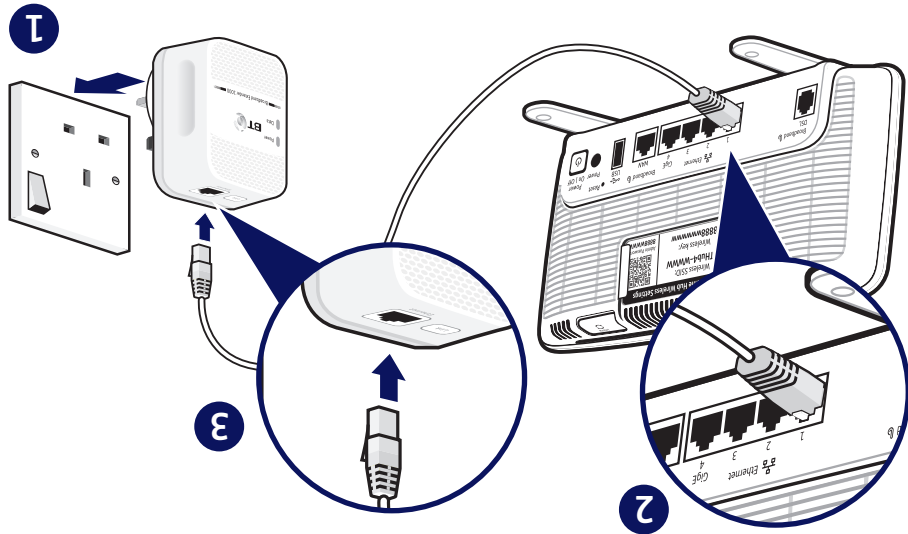
Broadband Extender 1000 Power consumption	
In operation	3.0 Watts
Network standby	1.95 Watts
Standby mode	0.39 Watts
Elapsed time before going into standby mode	5 Minutes



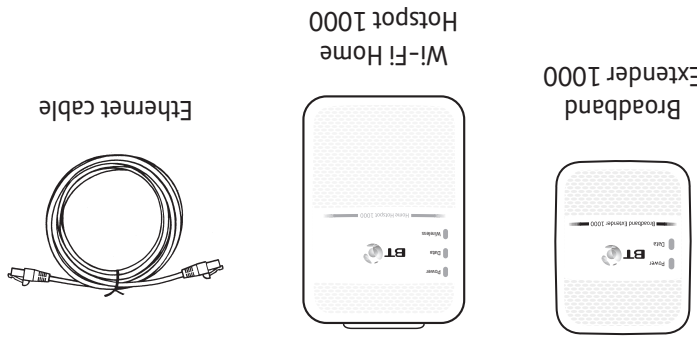
1 Plug in extender near your router

- 1 Plug the extender directly into a wall power socket. Make sure the socket's switched on.
- 2 Plug one end of the ethernet cable into a spare ethernet socket on your router/hub.
- 3 Plug the other end into the extender.

IMPORTANT: to work properly, extender and hotspot must be plugged directly into the wall socket and not into extension leads.



Check box content:



Find out more

- If you need more detailed instructions, Frequently Asked Questions are available at bt.com/hotspot1000
- If you cannot find the answer to your problem in the Frequently Asked Questions, then please call our free Helpline on **0808 100 6116***. Our dedicated advisors are more likely to be able to help you than the retailer where you made your purchase.



Wi-Fi Home Hotspot 1000 Kit User Guide

For a Better Future

We're always looking to make our products last longer and use less power, so we don't have such a big impact on the environment.

To find out about what we are doing, visit bt.com/betterfuture

Offices worldwide

The services described in this publication are subject to availability and may be modified from time to time. Services and equipment are supplied subject to British Telecommunications plc's respective standard conditions of contract. Nothing in this publication forms any part of a contract.

© British Telecommunications plc 2016.
Registered Office: 81 Newgate Street, London EC1A 7AJ.
Registered in England No. 1800000.

Designed and produced by The Art & Design Partnership Ltd.

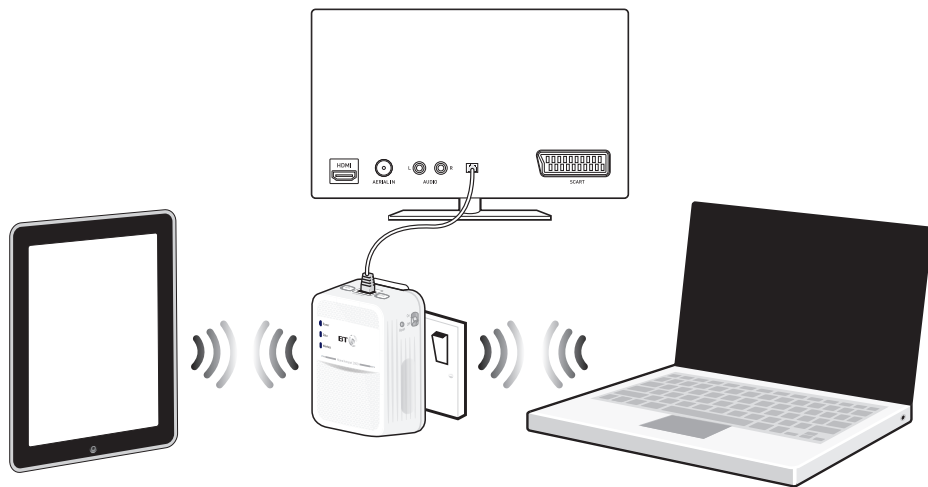
Printed in China / Issue 1 / ADP11-16



3 Connect your devices

Connect your devices using wi-fi or the ethernet cable.

☰ You can connect separate devices to the ethernet port and wi-fi at the same time.



To connect using wi-fi

☰ The hotspot wireless network names (SSID) and wireless password can be found on the pull-out card at the back of the hotspot.

As this is a dual band hotspot you will find two wireless network names on the card, one for the 2.4 GHz band and one for the 5 GHz band. The wireless password is the same for both bands and it is case sensitive.

The 2.4 GHz band is better for range and the 5 GHz band is better for speed.

The hotspot supports easy wi-fi connection with its **WPS** button. If your device also supports WPS, you can use it instead of the steps below so you don't have to enter the security key manually. Just follow the instructions on the device you're trying to connect to the hotspot.



- 1 Use the wireless connection software or settings on your device to display the list of available wireless networks in your area.
- 2 Find your hotspot in the list and select it; it's called **BTHomeSpot2-XXX** on the 2.4 GHz band and **BTHomeSpot5-XXX** on the 5 GHz band.
- 3 Enter your hotspot's wireless key printed on the pull-out card.
- 4 Complete the connection on your device.

☰ Your new Wi-Fi Home Hotspot 1000 and your existing wireless broadband router will show up as two separate networks. If your device shows both networks, it's worth giving both of them a go as one might be faster and more reliable than the other.

To connect using the ethernet cable

- 1 Connect your device to one of the ethernet ports on the hotspot.

☰ You'll need an ethernet cable for each device you want to connect to the hotspot.

Light status

Broadband Extender 1000

Light	Status	What's happening
Power	On	Extender running normally
	Flashing	Extender resetting, synchronising or power save mode
	Off	Extender turned off
Data	On	Extender connected to network Blue: High transfer speed Orange: Medium transfer speed Red: Low transfer speed
	Off	No connection to network

Wi-Fi Home Hotspot 1000

Light	Colour	Status	What's happening
Power	Blue	On	Hotspot running normally
		Flashing	Hotspot resetting or synchronising
		Slow Flashing	Hotspot in power save mode
	-	Off	Hotspot turned off
Data	Blue/ Orange/ Red	On	Hotspot connected to network Blue: High transfer speed Orange: Medium transfer speed Red: Low transfer speed
	-	Off	Hotspot not connected to network
Wireless	Blue	On	Wireless enabled, data is being transmitted/received
	Orange	Flashing	WPS setup in progress (quicker flashing indicates a WPS connection error)
	Orange	On	Wireless disabled
	Red	On	Wireless security turned off

Link & Reset Buttons

What do you want to do?	Press and hold
Prepare to join a new network	Link button for 5 to 8 seconds
Join a new network	Link button for 1 second
Reset to factory settings	Reset button for 1 second

☰ TIP: you may find it helpful to use a watch or a clock when using the **Link** button.

How to add more Powerline extenders to your existing network

You can expand your home network by adding more extenders to your existing kit.

- 1 Plug your additional broadband extender directly into a wall power socket. Make sure the socket's switched on.
- 2 Press the **Link** button on that extender for 5 to 8 seconds. Wait for the **Power** light to go back to steady blue.
- 3 Press the **Link** button again, this time for 1 second.
- 4 Within 2 minutes, press the **Link** button on one of the broadband extenders already in your home for 1 second to complete the connection to the network.
- 5 Wait for connection to complete. If everything's okay, the **Power** and **Data** indicators on the new extender will light up.

☰ TIP: you might find it easier to plug your new broadband extender in the same double power socket or near one of your existing ones whilst you set things up.

Reset to factory settings

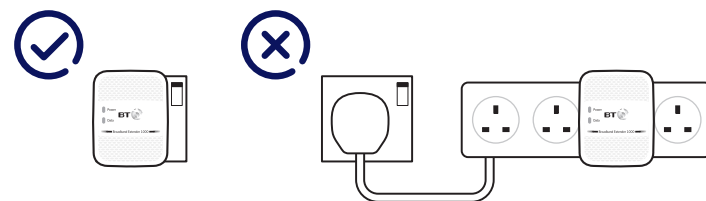
If your extender or hotspot stops working or becomes unpaired, you can reset both to their factory settings:

- 1 Make sure the extender or the hotspot is plugged in and the power socket's switched on.
- 2 Press the **Link** button on the extender for more than 15 seconds or the **Reset** pinhole on the hotspot for 1 second to restore factory default settings. Give it a couple of minutes. If everything's okay, the **Power** indicator on both will light up.



Connection help

☰ **IMPORTANT:** to work properly, extender and hotspot must be plugged directly into the wall socket and not into extension leads.



☰ For advanced settings e.g. to change the name (SSID) of your hotspot check the Frequently Asked Questions at bt.com/hotspot1000

Can't connect to hotspot using wi-fi

- Make sure you've used the correct wireless network and key details printed on the settings card.
- If you don't know how to view the list of wireless devices in your area to connect to the hotspot, see help provided with your device. Or check the Frequently Asked Questions on bt.com/hotspot1000

Poor wi-fi performance

- The new Wi-Fi Home Hotspot and your existing wireless broadband router will show up as two separate networks. You may want to try both wi-fi networks as one might be faster and more reliable than the other.
- Do not use the hotspot in an area where microwave and electric equipment may interfere with the wireless signal.
- Try to move the device nearer to your hotspot, which can improve the wireless signal quality.
- Thick/concrete walls and ceilings may affect wi-fi.

Data light is off or is red

- To check if your home's electrical wiring is affecting your broadband extenders, try plugging units in the same room. Some old wiring or fuse boxes might affect your network performance.
- Swap devices to help check and isolate a problem with a particular broadband extender unit.
- House appliances that draw large amounts of power, like fridges, freezers, microwaves and air conditioning systems, might cause interference with your network.
- For best network performance, use broadband extenders from BT.
- If there are no spare ports on your router/hub, you can unplug one of your existing devices and use an alternative like wi-fi or purchase a switch.

🔍 If you need more help, go to bt.com/hotspot1000 or call 0808 100 6116*.