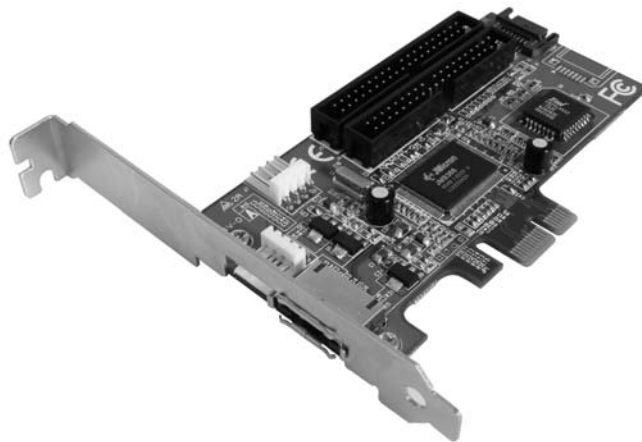


SATA and IDE Drive Controller Card

2 SATA 2 IDE Drive PCI Express Controller Card

PEXSAT2IDE2

Instruction Manual



Actual product may vary from photo

StarTech.com
Making hard-to-find easy

FCC Compliance Statement

This equipment has been tested and found to comply with the limits for a Class B digital device, pursuant to part 15 of the FCC Rules. These limits are designed to provide reasonable protection against harmful interference in a residential installation. This equipment generates, uses and can radiate radio frequency energy and, if not installed and used in accordance with the instructions, may cause harmful interference to radio communications. However, there is no guarantee that interference will not occur in a particular installation. If this equipment does cause harmful interference to radio or television reception, which can be determined by turning the equipment off and on, the user is encouraged to try to correct the interference by one or more of the following measures:

- Reorient or relocate the receiving antenna.
- Increase the separation between the equipment and receiver.
- Connect the equipment into an outlet on a circuit different from that to which the receiver is connected.
- Consult the dealer or an experienced radio/TV technician for help.

Use of Trademarks, Registered Trademarks, and other Protected Names and Symbols

This manual may make reference to trademarks, registered trademarks, and other protected names and/or symbols of third-party companies not related in any way to StarTech.com. Where they occur these references are for illustrative purposes only and do not represent an endorsement of a product or service by StarTech.com, or an endorsement of the product(s) to which this manual applies by the third-party company in question. Regardless of any direct acknowledgement elsewhere in the body of this document, StarTech.com hereby acknowledges that all trademarks, registered trademarks, service marks, and other protected names and/or symbols contained in this manual and related documents are the property of their respective holders.

Table of Contents

Introduction	1
Features	1
Before You Begin	1
System Requirements	1
Contents	1
Installation	2
Installing the PCI Express Card	2
Connecting drives to PEXSAT2IDE2	3
<i>IDE Drives</i>	3
<i>SATA Drive</i>	3
<i>eSATA Drive</i>	4
Configuring the Onboard BIOS	4
Specifications	7
Accessory Products from StarTech.com	7
Technical Support	8
Warranty Information	8

Introduction

Thank you for purchasing a StarTech.com SATA and IDE PCI Express Controller card, ideal for individuals using both IDE and SATA drives in the same system, this product allows you to connect two SATA drives on independent channels and up to two IDE devices on a single channel. Plus, with support for RAID 0, RAID 1 and JBOD, you can configure your hard drives to create an optimized storage solution.

Features

- Supports RAID 0, RAID 1, and JBOD
- Supports SATA II data transfer rate up to 300Mbps
- Ultra ATA-133 / IDE data transfer rates up to 133Mbps
- Compliant with PCI specification revision 2.2, and SATA 1.0 specification revision 1.0
- Supports Windows 98SE/ME/NT/2000/XP/Vista

Before You Begin

System Requirements

- A Pentium 4 or later Pentium compatible computer
- An available PCI Express slot
- Operating system requirement: Windows 98SE/ME/NT/2000/XP/Vista

Contents

This package should contain:

- SATA and PCI Express Controller Card (1)
- Driver CD (1)
- Instruction Manual (1)

Installation

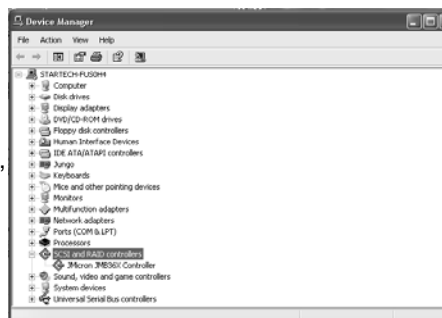
Installing the PCI Express Card

Please note that aside from the terminology used by each version of the Windows operating system differing slightly during the installation of PEXSAT2IDE2, the installation sequence is virtually identical.

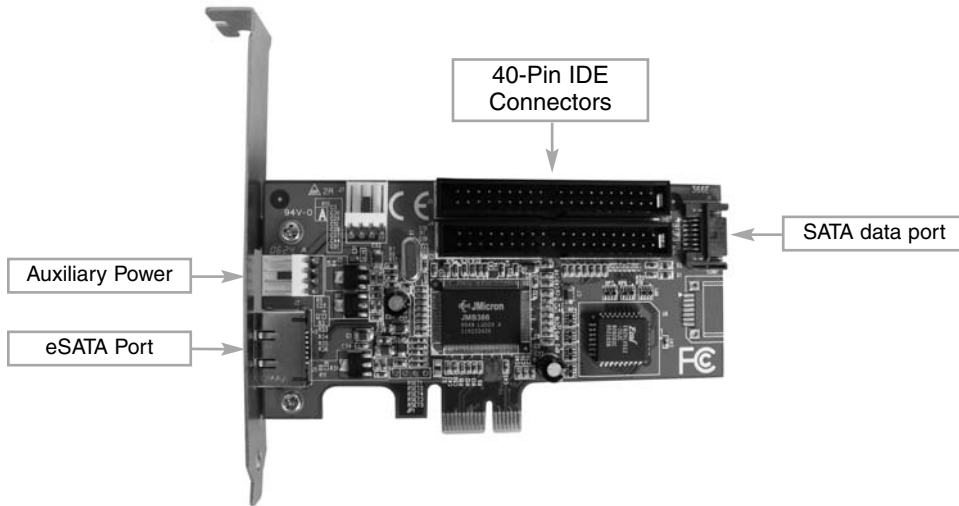
1. Make sure that your system is unplugged and you are grounded.
2. Remove the cover of your system (see your computer's user manual for details, if necessary) and gently turn your computer onto its side, so that the PCI Express expansion slot on the motherboard is facing upward.
3. Locate an empty PCI Express slot and remove the metal plate that covers the corresponding rear bracket. You may need a Phillips screwdriver to perform this step. Retain the screw! You will need it to secure the card later.
4. Gently insert the card into the empty slot, making sure it is firmly seated.
5. Secure the card to the rear panel, using the screw you removed in Step 3.
6. Power on the computer. Once the operating system is fully booted, insert the Driver CD (included) into the CD/DVD-ROM drive.
7. Browse to, and execute the **Setup.exe** program on the Driver CD. This will copy the necessary files to the computer. Once the files have been copied, please reboot the computer as prompted.
8. Once the computer has rebooted, Windows will detect that the card has been connected, and begin installing the files that were copied in step 7. You will notice several message balloons, appearing near the taskbar (usually the bottom right corner of the screen), indicating the different components as they are detected and installed. Once completed, the final message balloon will indicate that your new hardware is installed and ready to use:



9. To confirm that the installation was successful, browse to your Windows Device Manager by right-clicking on **My Computer**, selecting **Manage** with the left mouse button, and clicking on **Device Manager** in the left pane. In the right pane, click on **SCSI and RAID Controllers**, to ensure that the new device has been installed:



Connecting drives to PEXSAT2IDE2



Once PEXSAT2IDE2 and the necessary software have been installed, you can connect your hard drives to the card.

You may elect to mount the drives in the computer case prior to connecting them to the card. Please consult the documentation that accompanied the purchase of your hard drive, or computer case for further information on how to perform this step.

IDE Drives

To connect IDE drives to the card:

1. Attach one end of a standard 40-pin IDE cable to the IDE connector on the rear panel of the drive.
2. Attach the remaining 40-pin connector provided by the cable to one of the two IDE ports on the board.
3. Connect an LP4 power connector (provided by the computer power supply) to the power port on the hard drive.
4. Repeat steps 1-3 for the remaining IDE hard drive (if required).

SATA Drive

To connect SATA drives to the card:

1. Attach one end of a standard SATA cable to the SATA data port on the board (see above diagram).

Instruction Manual

2. Attach the remaining end of the SATA cable used in step 1 to the SATA data port provided by the hard drive.
3. Connect a SATA power cable (provided by the motherboard) to the power port on the drive.

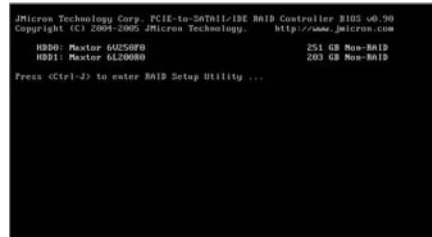
eSATA Drive

To connect an eSATA device to the card, simply insert the eSATA connector provided by the drive/disk enclosure to the eSATA port, located on the rear bracket of PEXSAT2IDE2.

Configuring the Onboard BIOS

Once you have connected the drives you wish to use with PEXSAT2IDE2, reattach the sides of the computer case and power up the computer.

When prompted during the boot process, enter the command code **CTRL + J** to enter the PEXSAT2IDE2 Onboard BIOS.



Once you have entered the BIOS, you will see the following screen:



To switch between panes, use the **TAB** button.

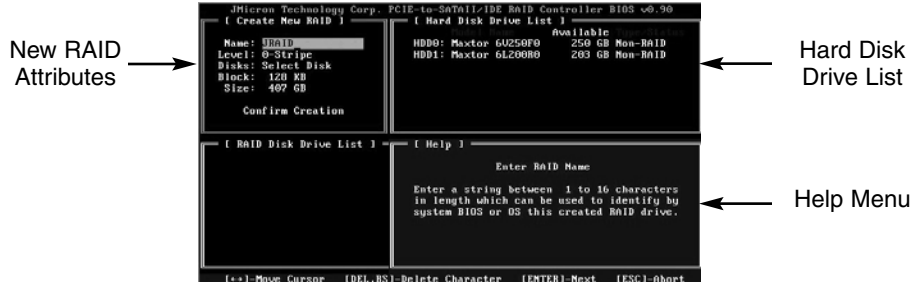
To scroll through selectable text (i.e. Create RAID Disk, Delete RAID Disk etc.) use the **up** and **down** arrow keys.

To select the highlighted text (as illustrated above, Create RAID DISK Drive) press the **ENTER** key.

Creating a RAID configuration

To create a RAID configuration, from the main window, select **Create RAID Disk Drive**, and press **Enter**.

The following window will display, allowing you to configure your RAID setup:



New RAID Attributes: Here, you can name your RAID configuration for easy reference. Also includes information regarding the type of RAID being used, the disks being used, as well as block and physical size of the RAID configuration.

Hard Disk Drive List: Lists the physical drives available for RAID configuration

Help Menu: This pane provides instruction as to how to perform the action selected elsewhere within the **Create New RAID** window.

Once RAID configuration is complete (based on your individual requirements), the RAID will be displayed in the **RAID Disk Drive List**, as illustrated below:



Deleting a RAID configuration

To delete a RAID configuration, use the **TAB** key to switch to the **RAID Disk Drive List**. Use the **up** and **down** arrow keys (on keyboard) to scroll between available RAID Disks and perform the delete function on the desired RAID Disk.

Instruction Manual

Reverting to non-RAID configuration

To return the physical drives to a non-RAID state, enter the **Revert HDD to Non-RAID** menu, and select the RAID Disk you wish to modify using the **up** and **down** arrow keys. Press Enter to select the chosen disk, and press **Y** (Yes) to accept the change.

```
JMicron Technology Corp. PCI-E-to-SATA11/IDE RAID Controller BIOS v0.90
[ Main Menu ]
Create RAID Disk Drive
Delete RAID Disk Drive
Revert HDD to Non-RAID
Save And Exit Setup
Exit Without Saving

[ Hard Disk Drive List ]
HDD0: Maxtor 6U250F0 251 GB RAID Inside
HDD1: Maxtor 6L200R0 200 GB RAID Inside

[ RAID Disk Drive ]
RBD0: JRAID 01

ALL DATA ON THE RAID WILL LOST!!
ARE YOU SURE TO REVERT (Y/N) ? Y

[ F11]-Select DISK [SPACE]-Mark Repeat [F5]-Confirm [ESC]-Abort
```



```
JMicron Technology Corp. PCI-E-to-SATA11/IDE RAID Controller BIOS v0.90
[ Main Menu ]
Create RAID Disk Drive
Delete RAID Disk Drive
Revert HDD to Non-RAID
Save And Exit Setup
Exit Without Saving

[ Hard Disk Drive List ]
HDD0: Maxtor 6U250F0 251 GB Non-RAID
HDD1: Maxtor 6L200R0 200 GB Non-RAID

[ RAID Disk Drive List ]
RBD0: JRAID 1-Mirror 200 GB Normal ??

[ F5]-Switch Window [F11]-Select ITEM [ENTER]-Action [ESC]-Exit
```

Specifications

Bus Type	PCI Express x1
Connectors	2 x SATA II 2 x Ultra ATA-133/IDE
Maximum Data Transfer Rate	300Mbps (SATA2 / SATA300) 133Mbps (IDE)
Chipset	JMicron JMB366
OS Support	Windows 2000/XP/Vista
Regulatory Certifications	CE, FCC, ROHS

Accessory Products from StarTech.com

Contact your local StarTech.com dealer or visit www.startech.com for cables or other accessories that will help you get the best performance out of your new product.



SATA18
18 in Serial ATA Drive Connection Cable



SATA18POW
18 inch Serial ATA Data Cable with LP4 Adapter



SATA24
24 in Serial ATA Drive Connection Cable



IDE_
24-inch Dual IDE Drive Cable



IDE100RND18
18 inch Round ATA 100/133 IDE cable



IDE100RND24
24 inch Round ATA 100/133 IDE Cable

Technical Support

StarTech.com's lifetime technical support is an integral part of our commitment to provide industry-leading solutions. If you ever need help with your product, visit www.startech.com/support and access our comprehensive selection of online tools, documentation, and downloads.

Warranty Information

This product is backed by a lifetime warranty. In addition, StarTech.com warrants its products against defects in materials and workmanship for the periods noted, following the initial date of purchase. During this period, the products may be returned for repair, or replacement with equivalent products at our discretion. The warranty covers parts and labor costs only. StarTech.com does not warrant its products from defects or damages arising from misuse, abuse, alteration, or normal wear and tear.

Limitation of Liability

In no event shall the liability of StarTech.com Ltd. and StarTech.com USA LLP (or their officers, directors, employees or agents) for any damages (whether direct or indirect, special, punitive, incidental, consequential, or otherwise), loss of profits, loss of business, or any pecuniary loss, arising out of or related to the use of the product exceed the actual price paid for the product. Some states do not allow the exclusion or limitation of incidental or consequential damages. If such laws apply, the limitations or exclusions contained in this statement may not apply to you.

About StarTech.com

StarTech.com is “The Professionals’ Source for Hard-to-Find Computer Parts”. Since 1985, we have been providing IT professionals with the quality products they need to complete their solutions. We offer an unmatched selection of computer parts, cables, server management solutions and A/V products and serve a worldwide market through our locations in the United States, Canada, the United Kingdom and Taiwan.

Visit **www.startech.com** for complete information about all our products and to access exclusive interactive tools such as the Parts Finder and the KVM Reference Guide. StarTech.com makes it easy to complete almost any IT solution. Find out for yourself why our products lead the industry in performance, support, and value.